

HANSAPLAST WOUND HEALING OINTMENT 20GR:

→ PROMOTES FASTER WOUND HEALING



Heal your wound faster* with Hansaplast Wound Healing Ointment. The ointment creates a protective film for an optimal moist wound healing environment and reduces the risk of scarring. Can be used on open, less superficial wounds during all stages of the healing process.

How to use: Clean the wound area before use. Gently apply a thin layer, once or twice a day. Make sure that the opening of the tube does not come into contact with your wound. If necessary, cover with plasters.

SUPPORTS HEALING OF WOUNDS & DAMAGED SKIN

Speeds up the natural healing of minor superficial wounds like cuts, abrasions and scratches as well as first and smaller second-degree burns.

REDUCES THE RISK OF SCARRING

Clinically proven to promote faster wound healing and reduce the risk of scarring.

VERY SKIN-FRIENDLY

The gentle formula is dermatologically tested* and is suitable for babies, children and sensitive skin.

FREE FROM:

Fragrances, colorants, preservatives and animal derived substances.

BDF ref: **48383**

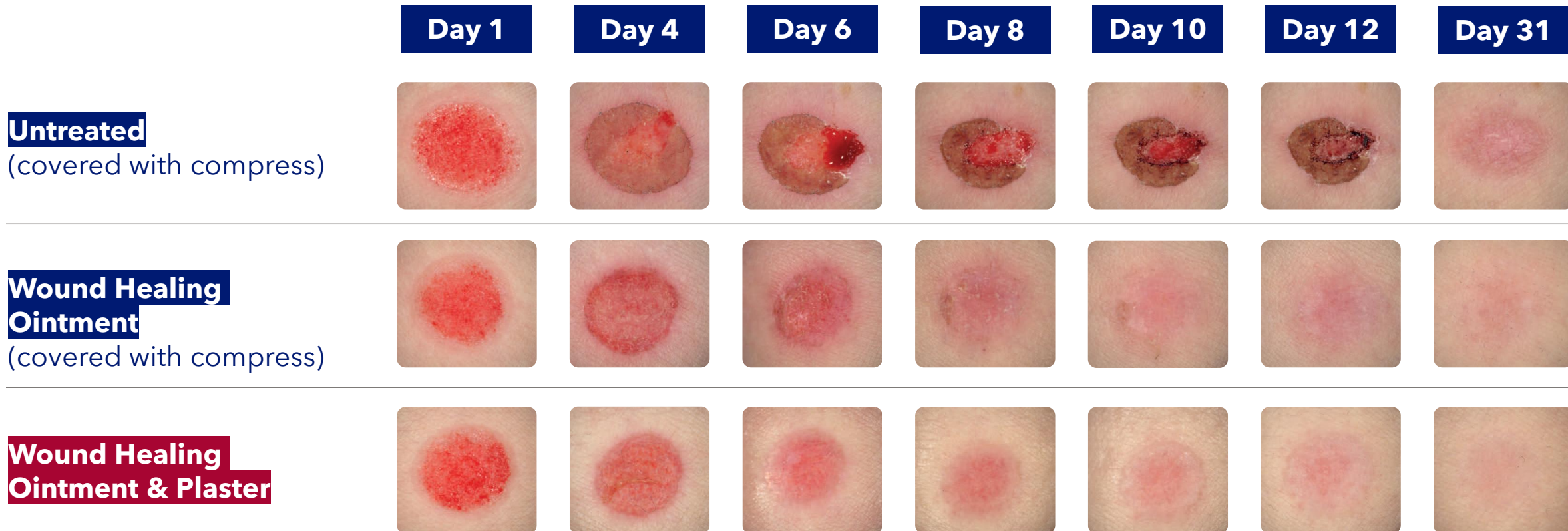
EAN: **4005800267208**

MD: **Class 2a**

HANSAPLAST WOUND HEALING OINTMENT 20GR: → EFFICACY CLINICALLY PROVEN



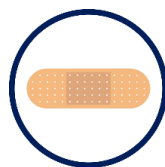
FASTER WOUND HEALING WHEN USING HANSAPLAST WOUND HEALING OINTMENT



HANSAPLAST WOUND HEALING OINTMENT 20GR: → RECOMMENDED USE WITHIN WOUND CARE ROUTINE



CLEANSE



PROTECT



HEAL

3 steps for a fast, simple and safe wound care routine

1. Cleanse the wound area with **Hansaplast Wound Spray**, a gentle, user- and skin-friendly wound rinse. Suitable for sensitive skin. Transparent, fragrance and odorless. Spray at a distance of about 10 cm and dry gently. Repeat if necessary.
2. Protect your wound from dirt and bacteria with a plaster. Hansaplast offers a large alternatives of plasters in different materials, shapes and formats. It is recommended to change plaster daily.
3. Promote faster wound healing by regularly apply **Hansaplast Wound Healing Ointment**. Cover with plaster if necessary



BDF ref: **48389**
MD: **Class 2b**



BDF ref: **48383**
MD: **Class 2a**