

# LUCAS<sup>®</sup> 2|3

Chest Compression System

**Genuine** Accessories

**LUCAS 2|3** Chest Compression System



# Your partner in **life support**

The LUCAS chest compression system provides Guidelines-consistent, high-quality chest compressions to sudden cardiac arrest patients under difficult conditions and for extended periods of time to give you a greater chance to improve patient outcomes as well as increase team safety and efficiencies.

In this catalog you will find the overview of optional power solutions and accessories for LUCAS 2 and LUCAS 3 devices.

If you have any questions about the LUCAS device, accessories or disposables, please contact your Stryker/Physio-Control representative.

## **LUCAS 3 chest compression system, version 3.1**

The LUCAS device is shipped with one battery, patient straps, stabilization strap, two disposable suction cups, a carrying case and the Instructions for Use. The device can connect wirelessly to the LIFENET® System for setup options, post-event report generation and asset management.

### **LUCAS 3 device, v3.1, in shipping box**

99576-000063 English  
99576-000064 International-English  
99576-000065 International-English, French  
99576-000069 Danish, Swedish, Norwegian  
99576-000070 Swedish, Finnish  
99576-000082 Icelandic  
99576-000071 German  
99576-000072 German, French, Italian  
99576-000073 German, French, Dutch  
99576-000074 Italian, Spanish, Portuguese  
99576-000075 Polish  
99576-000077 Estonian, Latvian, Lithuanian  
99576-000078 Croatian, Romanian, Slovenian  
99576-000079 Czech, Hungarian, Slovakian  
99576-000080 Greek, Turkish, Hebrew



## Accessories for LUCAS 3 devices

---



### **LUCAS Carrying Case, Hard Shell**

The LUCAS Hard Shell Case with Top Window for quick battery check and Rear Charge Port is the best way to protect your LUCAS device and carry your spare battery and accessories. Compatible with LUCAS 3 and LUCAS 2 devices.

**11576-000094**



### **LUCAS Back Plate, Slim**

The slim, low profile back plate is easy to deploy, adjust, strap to transportation devices and clean. Compatible with LUCAS 3 and LUCAS 2 devices.

**11576-000088**



### **LUCAS Bumper Integrated Shaft Seal, Black Pair**

The black rubber bumper accessory matches the colors of the LUCAS 3 device and is available to protect the hinge end caps.

**11576-000091**



### **Anti-slip Tape, LUCAS Back Plate, Slim**

The anti-slip tape is designed to increase the friction of the back plate and to reduce the risk of the device slipping when in contact with other hard surfaces (e.g., spine boards). Six strips in each pack.

**11576-000089**

**11576-000090** (3-Pack)

# Accessories for LUCAS 2 devices



## LUCAS 2 Carrying Bag

LUCAS 2 device is stored and carried in a soft padded carrying bag complete with storage pouches for a spare battery and external power supply.

**11576-000038**



## LUCAS 2 Back Plate

Replacement LUCAS 2 back plate is available in the event of damage or contamination of original.

**21996-000044**



## LUCAS 2 Back Plate Anti-slip Tape

The LUCAS 2 back plate anti-slip tape is designed to increase the friction of the back plate and to reduce the risk of the device slipping when in contact with other hard surfaces (e.g., spine boards).

**11576-000052**

**11576-000053** (3 Pack)

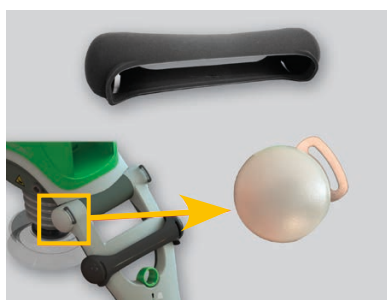


## LUCAS 2 Rubber Bumper with Integrated Shaft Seal (Pair)

If your device has hinges protected by the rubber bumper on your device support legs please order the Rubber Bumper with the integrated shaft seal (pair). The majority of LUCAS 2 devices require this bumper.

**11576-000072**

If you are still unsure which part you need, please contact customer support.



## LUCAS 2 Rubber Bumper (Pair)

If your device has a plastic cap on the support leg hinges please order the Rubber Bumper without integrated shaft seal (pair). LUCAS 2 devices older than 2012 may require this bumper.

**11576-000070**

If you are still unsure which part you need, please contact customer support.

## LUCAS 2|3 Chest Compression System

# Shared disposables, batteries & power accessories

For use with LUCAS 3 or LUCAS 2 devices



### LUCAS Disposable Suction Cup

LUCAS device has a disposable suction cup which can be easily changed after each use.

**11576-000046** (3-Pack)

**11576-000047** (12-Pack)



### LUCAS Stabilization Strap

The Stabilization strap is used to provide further stabilization relative to the patient and to prevent downward movement of the LUCAS device during operation. Each package includes the neck strap and a pair of support leg straps.

**21576-000074**

**21576-000075** (4-Pack)

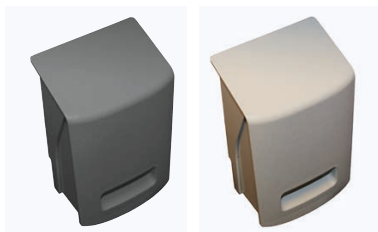


### LUCAS Patient Straps

The LUCAS patient straps are used to secure the patients arms to the support legs of the LUCAS device during transportation.

**11576-000050** (Pair)

**11576-000051** (Pair, 3-Pack)



### LUCAS Battery

The LUCAS battery is a rechargeable Lithium-Polymer (LiPo) battery which typically last for 45 minutes of operation. You can charge the battery quickly, less than 2 hours in the device if connected to the external power supply or car power cable, and less than 4 hours in the desktop charger.

**11576-000080**

(Dark Grey-LUCAS 3 device)

**11576-000039**

(Light Grey-LUCAS 2 device)

Either battery will work in either device, color is the only difference.



### LUCAS Battery Desk-Top Charger

The external battery desk-top charger is a stand-alone unit intended to charge one LUCAS Battery. It typically takes less than 4 hours to charge the battery. A mounting bracket is included for space-saving installation.

**11576-000060** (U.S , Canada)

**11576-000061** (EU)

**11576-000062** (UK)

**11576-000063** (Australia)

**11576-000068** (Japan)



### LUCAS Aux Power Supply (S/N 3009 0181 and above)

The external power supply (100-240VAC, 50/60 Hz) can be connected to the LUCAS device and supports prolonged operation as well as charging of the LUCAS Battery while in the device.

**11576-000071** (U.S., Canada)

**11576-000056** (EU)

**11576-000057** (UK)

**11576-000058** (Japan)

**11576-000059** (Australia)

**11576-000067** (Switzerland)



### LUCAS Car Cable

The car cable (12-28V DC) can be connected to the LUCAS device. It supports prolonged operation as well as less than 2 hour charge time of the LUCAS battery while in the device.

**11576-000048**



### LUCAS PCI Back Plate

The carbon fiber LUCAS PCI back plate is intended specifically for use in the cath lab. It is fully radiotranslucent, with minimum shadows. The PCI back plate is compatible with LUCAS 2 and LUCAS 3 devices.

**11576-000064**

# Instructions for Use and training



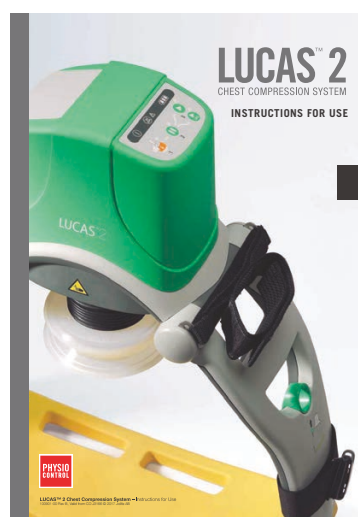
## LUCAS 3 Instructions for Use (version 3.1)

26500-003923 English (EN)  
 26500-003924 International-English (INTL-EN)  
 26500-003925 German (DE)  
 26500-003926 French (FR)  
 26500-003927 Dutch (NL)  
 26500-003928 Danish (DA)  
 26500-003929 Swedish (SV)  
 26500-003930 Norwegian (NO)  
 26500-003931 Finnish (FI)  
 26500-003932 Italian (IT)  
 26500-003933 Greek (EL)  
 26500-003934 Spanish (ES)  
 26500-003935 Portuguese (PT)  
 26500-003936 Czech (CS)  
 26500-003937 Polish (PL)  
 26500-003938 Hungarian (HU)  
 26500-003940 Japanese (JA)  
 26500-003941 Turkish (TR)  
 26500-003942 Croatian (HR)  
 26500-003943 Chinese (ZH)  
 26500-003944 Slovakian (SK)  
 26500-003945 Korean (KO)  
 26500-003946 Hebrew (HE)  
 26500-003948 Romanian (RO)  
 26500-003949 Estonian (ET)  
 26500-003950 Latvian (LV)  
 26500-003951 Lithuanian (LT)  
 26500-003952 Slovenian (SL)  
 26500-003953 Icelandic (IS)



## LUCAS 3 Instructions for Use (version 3.0)

26500-003716 English (EN)  
 26500-003717 International-English (INTL-EN)  
 26500-003718 German (DE)  
 26500-003719 French (FR)  
 26500-003720 Dutch (NL)  
 26500-003721 Danish (DA)  
 26500-003722 Swedish (SV)  
 26500-003723 Norwegian (NO)  
 26500-003724 Finnish (FI)  
 26500-003725 Italian (IT)  
 26500-003726 Greek (EL)  
 26500-003727 Spanish (ES)  
 26500-003728 Portuguese (PT)  
 26500-003729 Czech (CS)  
 26500-003730 Polish (PL)  
 26500-003731 Hungarian (HU)  
 26500-003733 Japanese (JA)  
 26500-003734 Turkish (TR)  
 26500-003735 Croatian (HR)  
 26500-003736 Chinese (ZH)  
 26500-003737 Slovakian (SK)  
 26500-003738 Korean (KO)  
 26500-003739 Hebrew (HE)  
 26500-003741 Romanian (RO)  
 26500-003742 Estonian (ET)  
 26500-003743 Latvian (LV)  
 26500-003744 Lithuanian (LT)  
 26500-003745 Slovenian (SL)  
 26500-003746 Icelandic (IS)



## LUCAS 2 Instructions for Use (version 2.2)

26500-003588 English (EN)  
 26500-003589 International-English (INTL-EN)  
 26500-003590 German (DE)  
 26500-003591 French (FR)  
 26500-003592 Dutch (NL)  
 26500-003602 Danish (DA)  
 26500-003593 Swedish (SV)  
 26500-003594 Norwegian (NO)  
 26500-003595 Finnish (FI)  
 26500-003596 Italian (IT)  
 26500-003597 Greek (EL)  
 26500-003598 Spanish (ES)  
 26500-003599 Portuguese (PT)  
 26500-003600 Czech (CS)  
 26500-003601 Polish (PL)  
 26500-003603 Hungarian (HU)  
 26500-003604 Russian (RU)  
 26500-003605 Japanese (JA)  
 26500-003606 Turkish (TR)  
 26500-003607 Croatian (HR)  
 26500-003608 Chinese (ZH)  
 26500-003609 Slovakian (SK)  
 26500-003610 Korean (KO)  
 26500-003648 Hebrew (HE)  
 26500-003649 Bulgarian (BG)  
 26500-003650 Romanian (RO)  
 26500-003651 Estonian (ET)  
 26500-003652 Latvian (LV)  
 26500-003653 Lithuanian (LT)  
 26500-003654 Slovenian (SL)

For version 2.1 please contact customer service.



## LUCAS 3 Training Device

The LUCAS 3 Training Device is a non-clinical device intended for training purposes only. It should only be used on manikins.

LUCAS 3 99576-000083

Comprehensive training resources for LUCAS 3 can be downloaded at [physio-control.com/lucas](http://physio-control.com/lucas).

**Physio-Control är nu en del av Stryker.**

**För ytterligare information var god kontakta din lokala Physio-Control representant eller besök [www.physio-control.se](http://www.physio-control.se)**

---

**Physio-Control Headquarters**

11811 Willows Road NE  
Redmond, WA 98052 USA  
Tel 425 867 4000  
[www.physio-control.com](http://www.physio-control.com)

**Physio-Control Operations**

**Netherlands B.V.**  
Herikerbergweg 110  
1101 CM Amsterdam  
Netherlands  
Tel +31 (0)43 3620008  
Fax +31 (0)43 3632001

**Physio-Control Sverige / Jolife AB**

[info.nordic@stryker.com](mailto:info.nordic@stryker.com)  
Tel 0770-870 120  
[www.physio-control.se](http://www.physio-control.se)